

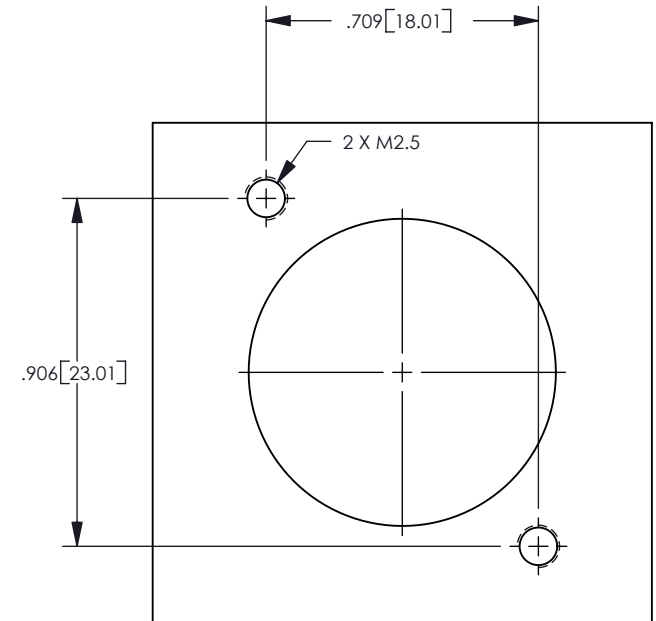
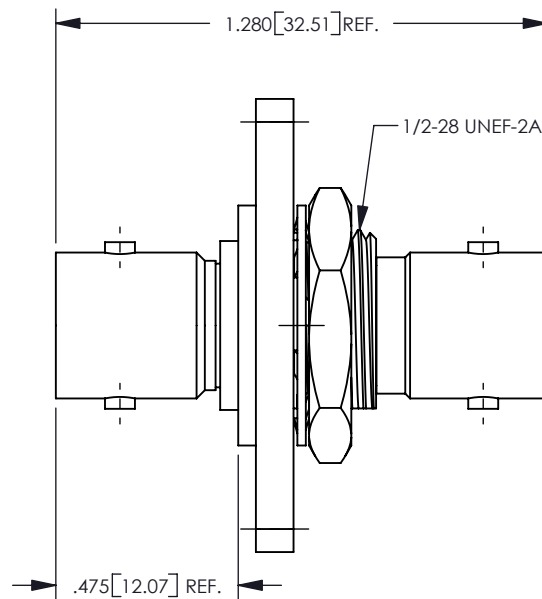
NOTES: UNLESS OTHERWISE SPECIFIED
 1. FOR GENERAL SERIES SPECIFICATIONS, SEE SDPRF-206.

2. MATERIAL SPECIFICATIONS:
 BODY: BRASS PER ASTM B16
 INSULATOR: TEFLON PER ASTM D1710
 FLANGE: COLD ROLLED STEEL PER SPCC.
 LOCK WASHER: PHOSPHOROUS BRONZE

3. FINISH SPECIFICATIONS:
 BODY: .000100MIN NICKEL PER AMS-QQ-N-290
 OVER COPPER FLASH PER ASTM B734 (ROHS)
 CONTACT: .000050 MIN. GOLD PER ASTM B488, OVER NICKEL PER
 AMS-QQ-N-290 (ROHS)
 ALL OTHER METAL PARTS: .000050 MIN NICKEL PER AMS-QQ-N290 OVER
 .000050 MIN COPPER PER ASTM B734 (ROHS)

4. ELECTRICAL SPECIFICATIONS:
 IMPEDANCE: 75 OHMS
 FREQUENCY RANGE: DC TO 2 GHz
 WORKING VOLTAGE: 500VRMS.

REV	DESCRIPTION	BY DATE	APPD
01	PRELIMINARY DRAWING SUBJECT TO REVISION EWR08-ER8364	CY 06/26/08	CTC



CATALOG P/N: 206G-099-00201N

PER ASME Y14.5M-1994 UNLESS OTHERWISE SPECIFIED: DIMENSIONS ARE IN INCHES [MM] TOLERANCES: DECIMAL: .XX [X.X] ± .01 [0.3] .XXX [X.XX] ± .005 [0.13] .XXXX [X.XXX] ± .0005 ANGLES: ± 2° SCALE: 2:1				 Winchester Electronics 62 Barnes Industrial Road North Wallingford, Connecticut 06492	
CUSTOMER DRAWING				BNC 75 ohm J-J ADAPTER ISO GRND, FLANGE	
DRAWN	DATE	APPROVED	DATE	A SD206G-099-00201N SHT 1 OF 1	REV 01
CY	06/26/08	DW	06/27/08		
APPROVED	DATE	APPROVED	DATE		
KEVIN	06/27/08	COLIN	06/27/08		